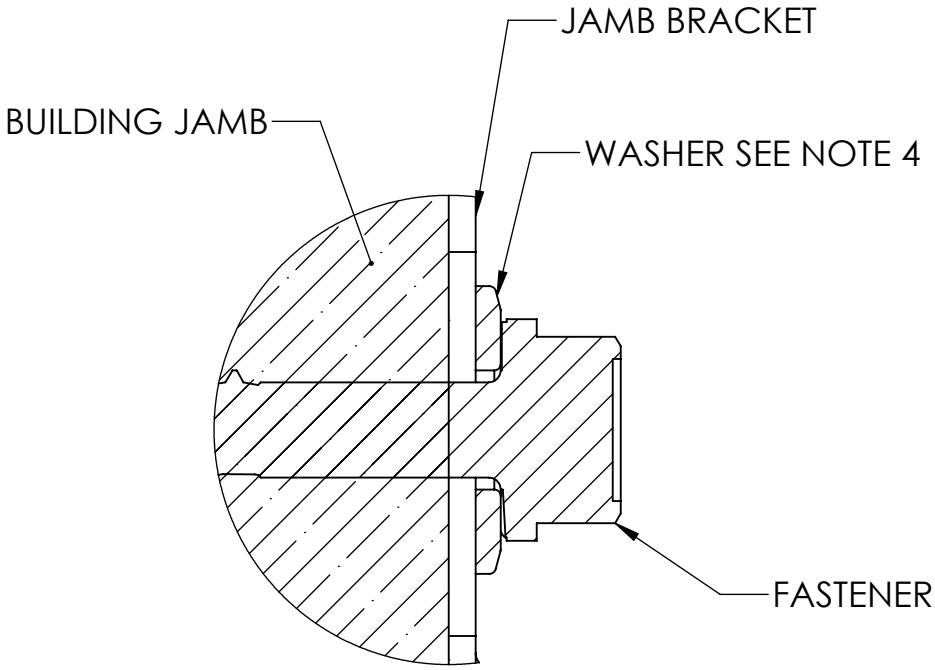
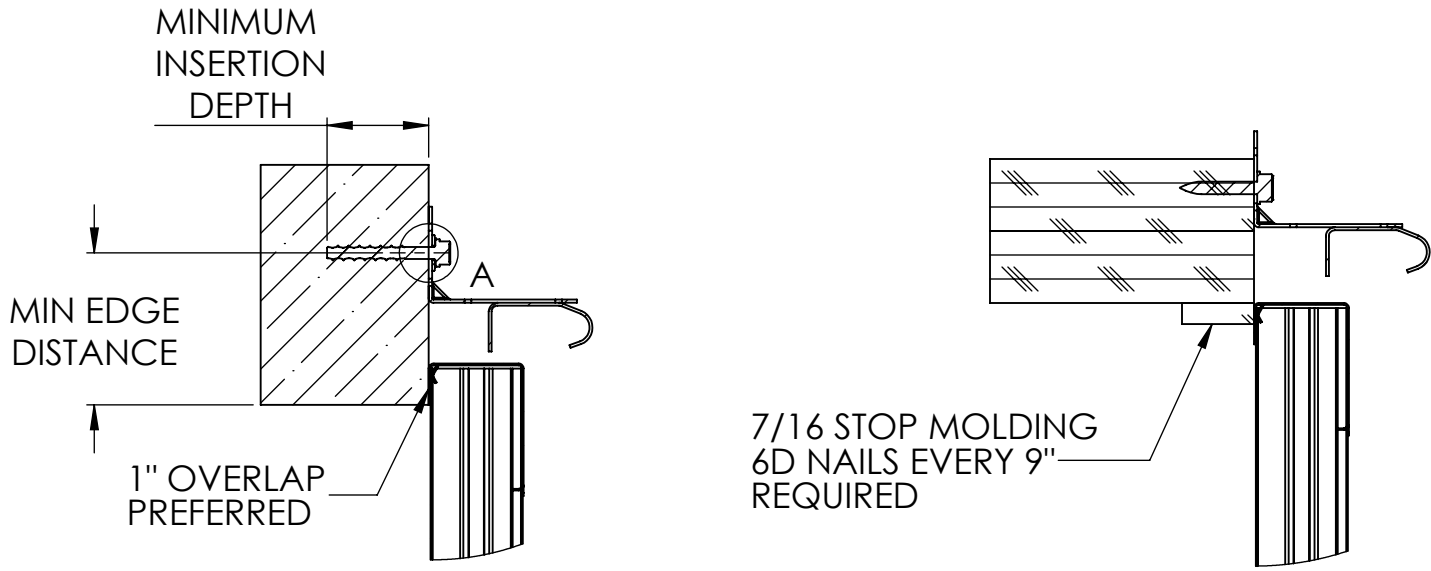


REV.	DESCRIPTION	DATE	APPROVED
------	-------------	------	----------




BUILDING JAMB	FASTENER DETAIL	MIN INSERTION	MIN EDGE
SOUTHERN PINE	LAG SCREW 5/16 x 1-5/8 (INCLUDED)	1-1/2"	1/2"
SPF	LAG SCREW 5/16 x 2-1/4	2-1/8"	1/2"
2500 KSI CONCRETE OR BETTER	ITW 1/4" TAPCON REQUIRES WASHER	2"	1-3/4"
	POWERS 1/4" WEDGE-BOLT+ REQUIRES WASHER	1-3/4"	1-3/4"
	ITW RED HEAD 1/4" TRUBOLT REQUIRES WASHER	1-3/4"	1-3/4"

- NOTES:
- 1. JAMB BRACKETS MUST MOUNT DIRECTLY TO BUILDING JAMB, (NO DRYWALL)
 - 2. ADDITIONAL ACCEPTABLE METHODS OF TRACK MOUNTING INCLUDE; CONTINUOUS ANGLES, AND CLIP MOUNT ANGLE.
 - 3. TRACK MOUNTING BOLTS MUST FOLLOW POSITIONS AS SHOWN ON DRAWING.
 - 4. DOORS WIDER THAN 12'2" REQUIRE WASHERS BE ADDED TO JAMB BRACKETS. ALL 1/4" ANCHORS REQUIRE A WASHER.

Printed copies of this document are not considered signed and sealed and the signature must be verified on any electronic copies.

John E. Scates, PE
8811 Teel Pkwy # 100-5175
Frisco, TX 75036
FL PE 51737
TX PE 56308 / F2203



INVICTA
DOOR™

DRAWING NO: JAMB ATTACHMENT

DESCRIPTION: WALL ATTACHMENT OPTIONS

DATE: 12/18/2024

SHEET 1 OF 1

DRAWN BY	ASG	DATE	10/23/24
CHECKED BY	SD	DATE	12/17/24